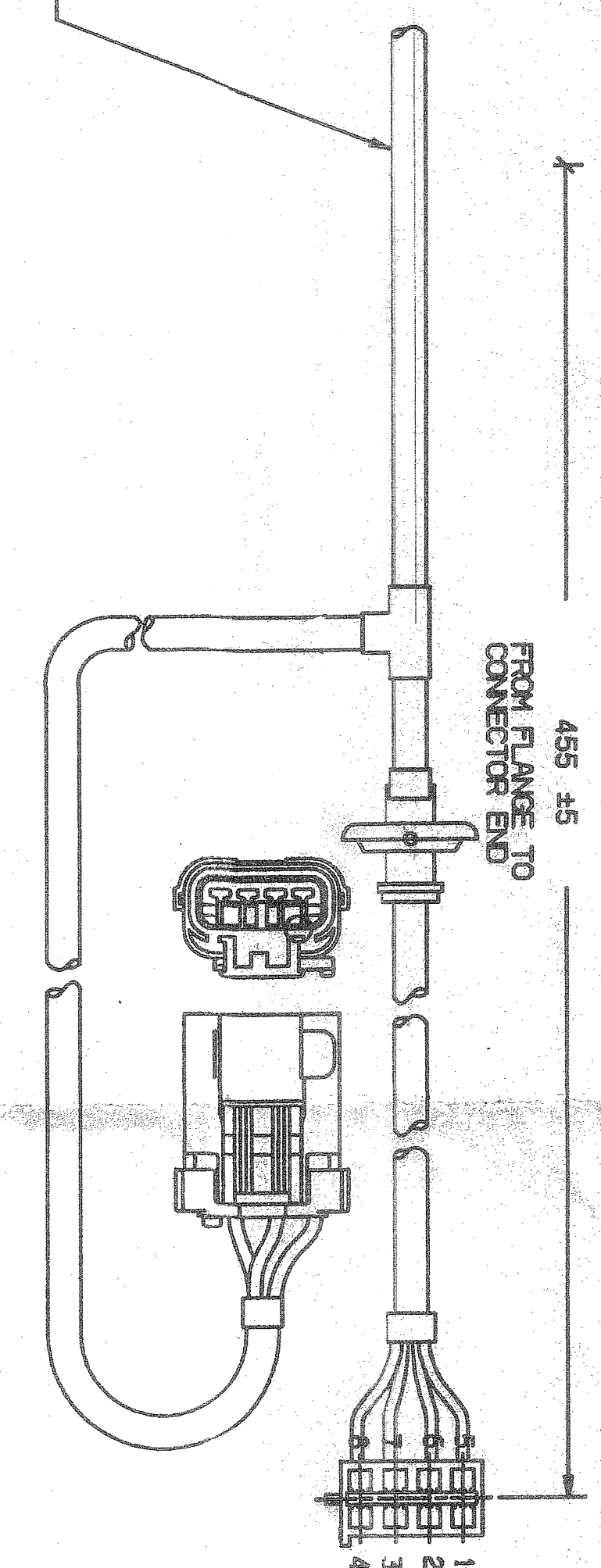


GR	COLING	CONV NO	DESCRIPTION	CONV 1 UNIT	DESCRIPTION	CONV 2	DESCRIPTION	FUNCTION
16	RD	1	BODY JOINING	ALL	FUEL TANK	1	FUEL	FUEL PUMP
17	RD	2	BODY JOINING	ALL	FUEL TANK	2	FUEL	FUEL PUMP
18	RD	3	BODY JOINING	ALL	FUEL TANK	3	FUEL	FUEL PUMP
18	RD	4	BODY JOINING	ALL	FUEL TANK	4	FUEL	FUEL PUMP
18	RD	5	BODY JOINING	ALL	FUEL TANK	5	FUEL	FUEL PUMP
18	RD	6	BODY JOINING	ALL	FUEL TANK	6	FUEL	FUEL PUMP
18	RD	7	BODY JOINING	ALL	FUEL TANK	7	FUEL	FUEL PUMP
18	RD	8	BODY JOINING	ALL	FUEL TANK	8	FUEL	FUEL PUMP
18	RD	9	BODY JOINING	ALL	FUEL TANK	9	FUEL	FUEL PUMP
18	RD	10	BODY JOINING	ALL	FUEL TANK	10	FUEL	FUEL PUMP
18	RD	11	BODY JOINING	ALL	FUEL TANK	11	FUEL	FUEL PUMP
18	RD	12	BODY JOINING	ALL	FUEL TANK	12	FUEL	FUEL PUMP
18	RD	13	BODY JOINING	ALL	FUEL TANK	13	FUEL	FUEL PUMP
18	RD	14	BODY JOINING	ALL	FUEL TANK	14	FUEL	FUEL PUMP
18	RD	15	BODY JOINING	ALL	FUEL TANK	15	FUEL	FUEL PUMP
18	RD	16	BODY JOINING	ALL	FUEL TANK	16	FUEL	FUEL PUMP
18	RD	17	BODY JOINING	ALL	FUEL TANK	17	FUEL	FUEL PUMP
18	RD	18	BODY JOINING	ALL	FUEL TANK	18	FUEL	FUEL PUMP
18	RD	19	BODY JOINING	ALL	FUEL TANK	19	FUEL	FUEL PUMP
18	RD	20	BODY JOINING	ALL	FUEL TANK	20	FUEL	FUEL PUMP
18	RD	21	BODY JOINING	ALL	FUEL TANK	21	FUEL	FUEL PUMP
18	RD	22	BODY JOINING	ALL	FUEL TANK	22	FUEL	FUEL PUMP
18	RD	23	BODY JOINING	ALL	FUEL TANK	23	FUEL	FUEL PUMP
18	RD	24	BODY JOINING	ALL	FUEL TANK	24	FUEL	FUEL PUMP
18	RD	25	BODY JOINING	ALL	FUEL TANK	25	FUEL	FUEL PUMP
18	RD	26	BODY JOINING	ALL	FUEL TANK	26	FUEL	FUEL PUMP
18	RD	27	BODY JOINING	ALL	FUEL TANK	27	FUEL	FUEL PUMP
18	RD	28	BODY JOINING	ALL	FUEL TANK	28	FUEL	FUEL PUMP
18	RD	29	BODY JOINING	ALL	FUEL TANK	29	FUEL	FUEL PUMP
18	RD	30	BODY JOINING	ALL	FUEL TANK	30	FUEL	FUEL PUMP
18	RD	31	BODY JOINING	ALL	FUEL TANK	31	FUEL	FUEL PUMP
18	RD	32	BODY JOINING	ALL	FUEL TANK	32	FUEL	FUEL PUMP
18	RD	33	BODY JOINING	ALL	FUEL TANK	33	FUEL	FUEL PUMP
18	RD	34	BODY JOINING	ALL	FUEL TANK	34	FUEL	FUEL PUMP
18	RD	35	BODY JOINING	ALL	FUEL TANK	35	FUEL	FUEL PUMP
18	RD	36	BODY JOINING	ALL	FUEL TANK	36	FUEL	FUEL PUMP
18	RD	37	BODY JOINING	ALL	FUEL TANK	37	FUEL	FUEL PUMP
18	RD	38	BODY JOINING	ALL	FUEL TANK	38	FUEL	FUEL PUMP
18	RD	39	BODY JOINING	ALL	FUEL TANK	39	FUEL	FUEL PUMP
18	RD	40	BODY JOINING	ALL	FUEL TANK	40	FUEL	FUEL PUMP
18	RD	41	BODY JOINING	ALL	FUEL TANK	41	FUEL	FUEL PUMP
18	RD	42	BODY JOINING	ALL	FUEL TANK	42	FUEL	FUEL PUMP
18	RD	43	BODY JOINING	ALL	FUEL TANK	43	FUEL	FUEL PUMP
18	RD	44	BODY JOINING	ALL	FUEL TANK	44	FUEL	FUEL PUMP
18	RD	45	BODY JOINING	ALL	FUEL TANK	45	FUEL	FUEL PUMP
18	RD	46	BODY JOINING	ALL	FUEL TANK	46	FUEL	FUEL PUMP
18	RD	47	BODY JOINING	ALL	FUEL TANK	47	FUEL	FUEL PUMP
18	RD	48	BODY JOINING	ALL	FUEL TANK	48	FUEL	FUEL PUMP
18	RD	49	BODY JOINING	ALL	FUEL TANK	49	FUEL	FUEL PUMP
18	RD	50	BODY JOINING	ALL	FUEL TANK	50	FUEL	FUEL PUMP
18	RD	51	BODY JOINING	ALL	FUEL TANK	51	FUEL	FUEL PUMP
18	RD	52	BODY JOINING	ALL	FUEL TANK	52	FUEL	FUEL PUMP
18	RD	53	BODY JOINING	ALL	FUEL TANK	53	FUEL	FUEL PUMP
18	RD	54	BODY JOINING	ALL	FUEL TANK	54	FUEL	FUEL PUMP
18	RD	55	BODY JOINING	ALL	FUEL TANK	55	FUEL	FUEL PUMP
18	RD	56	BODY JOINING	ALL	FUEL TANK	56	FUEL	FUEL PUMP
18	RD	57	BODY JOINING	ALL	FUEL TANK	57	FUEL	FUEL PUMP
18	RD	58	BODY JOINING	ALL	FUEL TANK	58	FUEL	FUEL PUMP
18	RD	59	BODY JOINING	ALL	FUEL TANK	59	FUEL	FUEL PUMP
18	RD	60	BODY JOINING	ALL	FUEL TANK	60	FUEL	FUEL PUMP
18	RD	61	BODY JOINING	ALL	FUEL TANK	61	FUEL	FUEL PUMP
18	RD	62	BODY JOINING	ALL	FUEL TANK	62	FUEL	FUEL PUMP
18	RD	63	BODY JOINING	ALL	FUEL TANK	63	FUEL	FUEL PUMP
18	RD	64	BODY JOINING	ALL	FUEL TANK	64	FUEL	FUEL PUMP
18	RD	65	BODY JOINING	ALL	FUEL TANK	65	FUEL	FUEL PUMP
18	RD	66	BODY JOINING	ALL	FUEL TANK	66	FUEL	FUEL PUMP
18	RD	67	BODY JOINING	ALL	FUEL TANK	67	FUEL	FUEL PUMP
18	RD	68	BODY JOINING	ALL	FUEL TANK	68	FUEL	FUEL PUMP
18	RD	69	BODY JOINING	ALL	FUEL TANK	69	FUEL	FUEL PUMP
18	RD	70	BODY JOINING	ALL	FUEL TANK	70	FUEL	FUEL PUMP
18	RD	71	BODY JOINING	ALL	FUEL TANK	71	FUEL	FUEL PUMP
18	RD	72	BODY JOINING	ALL	FUEL TANK	72	FUEL	FUEL PUMP
18	RD	73	BODY JOINING	ALL	FUEL TANK	73	FUEL	FUEL PUMP
18	RD	74	BODY JOINING	ALL	FUEL TANK	74	FUEL	FUEL PUMP
18	RD	75	BODY JOINING	ALL	FUEL TANK	75	FUEL	FUEL PUMP
18	RD	76	BODY JOINING	ALL	FUEL TANK	76	FUEL	FUEL PUMP
18	RD	77	BODY JOINING	ALL	FUEL TANK	77	FUEL	FUEL PUMP
18	RD	78	BODY JOINING	ALL	FUEL TANK	78	FUEL	FUEL PUMP
18	RD	79	BODY JOINING	ALL	FUEL TANK	79	FUEL	FUEL PUMP
18	RD	80	BODY JOINING	ALL	FUEL TANK	80	FUEL	FUEL PUMP
18	RD	81	BODY JOINING	ALL	FUEL TANK	81	FUEL	FUEL PUMP
18	RD	82	BODY JOINING	ALL	FUEL TANK	82	FUEL	FUEL PUMP
18	RD	83	BODY JOINING	ALL	FUEL TANK	83	FUEL	FUEL PUMP
18	RD	84	BODY JOINING	ALL	FUEL TANK	84	FUEL	FUEL PUMP
18	RD	85	BODY JOINING	ALL	FUEL TANK	85	FUEL	FUEL PUMP
18	RD	86	BODY JOINING	ALL	FUEL TANK	86	FUEL	FUEL PUMP
18	RD	87	BODY JOINING	ALL	FUEL TANK	87	FUEL	FUEL PUMP
18	RD	88	BODY JOINING	ALL	FUEL TANK	88	FUEL	FUEL PUMP
18	RD	89	BODY JOINING	ALL	FUEL TANK	89	FUEL	FUEL PUMP
18	RD	90	BODY JOINING	ALL	FUEL TANK	90	FUEL	FUEL PUMP
18	RD	91	BODY JOINING	ALL	FUEL TANK	91	FUEL	FUEL PUMP
18	RD	92	BODY JOINING	ALL	FUEL TANK	92	FUEL	FUEL PUMP
18	RD	93	BODY JOINING	ALL	FUEL TANK	93	FUEL	FUEL PUMP
18	RD	94	BODY JOINING	ALL	FUEL TANK	94	FUEL	FUEL PUMP
18	RD	95	BODY JOINING	ALL	FUEL TANK	95	FUEL	FUEL PUMP
18	RD	96	BODY JOINING	ALL	FUEL TANK	96	FUEL	FUEL PUMP
18	RD	97	BODY JOINING	ALL	FUEL TANK	97	FUEL	FUEL PUMP
18	RD	98	BODY JOINING	ALL	FUEL TANK	98	FUEL	FUEL PUMP
18	RD	99	BODY JOINING	ALL	FUEL TANK	99	FUEL	FUEL PUMP
18	RD	100	BODY JOINING	ALL	FUEL TANK	100	FUEL	FUEL PUMP

WIRE ASSEMBLY



NOTES

- 1) SHIPPING CANS REQUIRED ON ALL OPEN PORTS.
- 2) LEVEL UNIT ASSESS A DUTY OF RESISTANCE SHALL CONFORM AS OUTLINED IN LEVEL UNIT CHART.
- 3) A VACUUM OF 13.5 PSI APPLIED TO THE ASSEMBLY RETURN FLOW IN THE SUPPLY RETURNING GAS OR ENGINE RETURN APPROVED EQUIVALENT (10% LINE CHECK REQUIRED).
- 4) FOR PER-847, SEC. 2.4.11, 6.0 AMPS MAX DRY DEAD-HEAD CURRENT.
- 5) FOR PER-847, SEC. 2.4.15, ALL INTERNAL SUPPLY AND RETURN LINE CIRCUITS, INCLUDING REGULATOR, SHALL BE CAPABLE OF WITHSTANDING 830 PSI WITHOUT RUPTURE (V AND W) REQUIREMENT.
- 6) DIMENSIONS VARKED WITH "A" SET-UP DIMENSIONS FOR CHECKING LEVEL UNIT CALIBRATIONS.

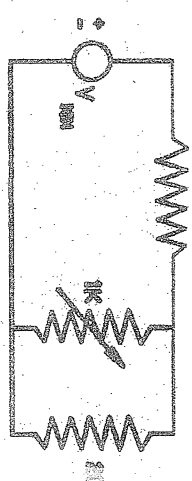
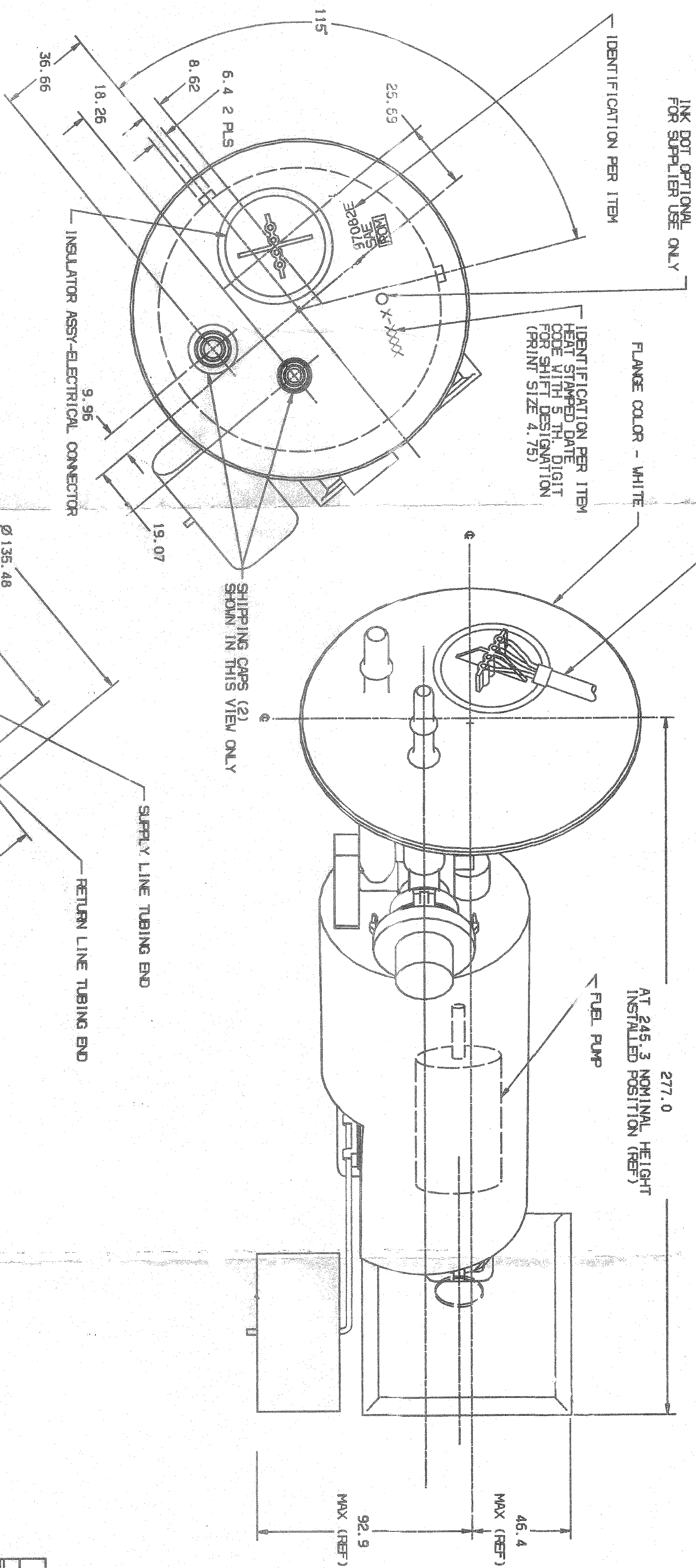
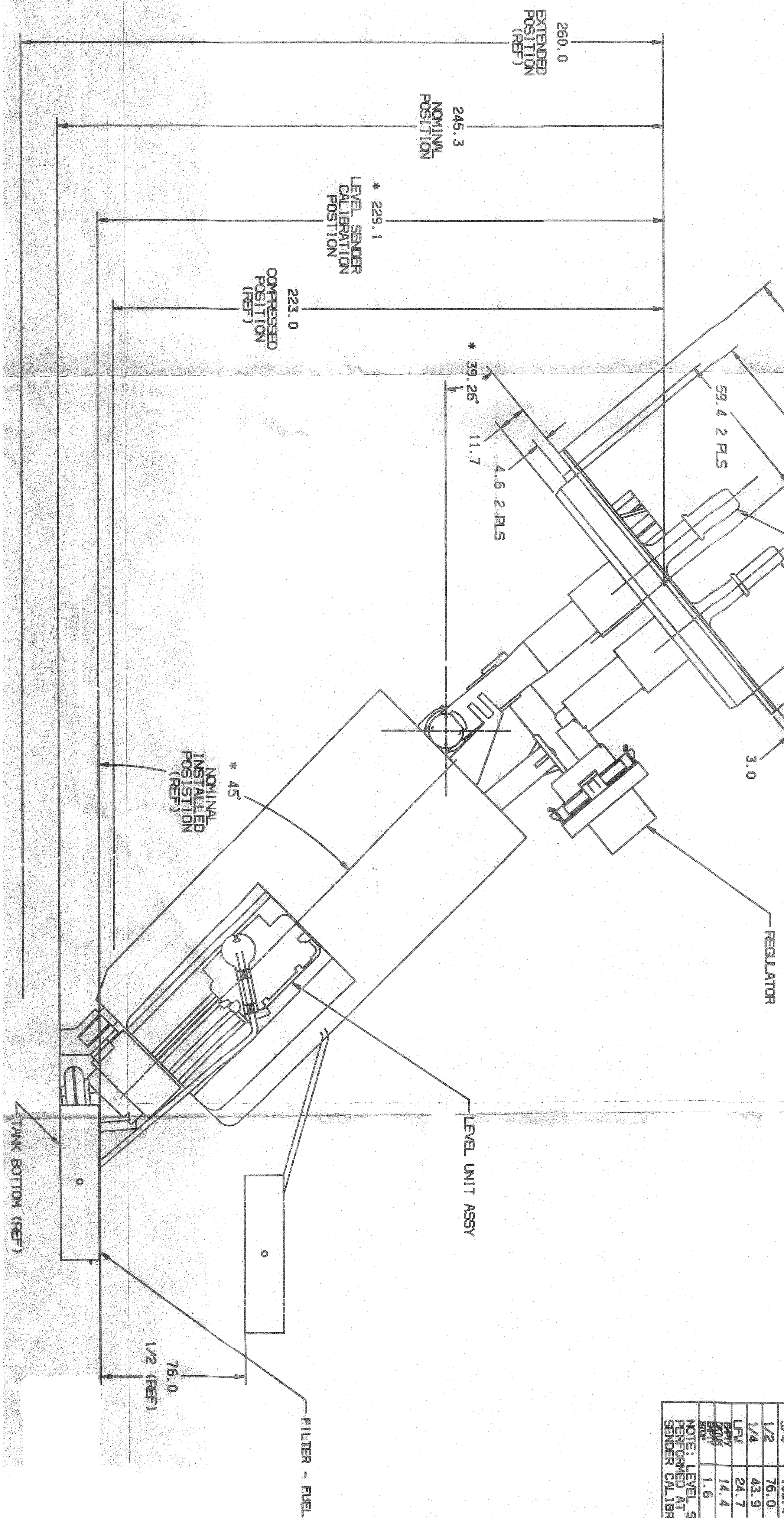


FIGURE 2
LEVEL UNIT CIRCUIT

LEVEL UNIT									
RESISTANCE VS. FLOAT HEIGHT									
POINT	Water		Nonwater		Water		Water		Notes
	W	H	W	H	W	H	W	H	
1	11.5	33.0	60.1	70.1	50.2	60.2			
2	11.5	33.0	60.1	70.1	50.2	60.2			
3	11.5	33.0	60.1	70.1	50.2	60.2			
4	11.5	33.0	60.1	70.1	50.2	60.2			
5	11.5	33.0	60.1	70.1	50.2	60.2			
6	11.5	33.0	60.1	70.1	50.2	60.2			
7	11.5	33.0	60.1	70.1	50.2	60.2			
8	11.5	33.0	60.1	70.1	50.2	60.2			
9	11.5	33.0	60.1	70.1	50.2	60.2			
10	11.5	33.0	60.1	70.1	50.2	60.2			
11	11.5	33.0	60.1	70.1	50.2	60.2			
12	11.5	33.0	60.1	70.1	50.2	60.2			
13	11.5	33.0	60.1	70.1	50.2	60.2			
14	11.5	33.0	60.1	70.1	50.2	60.2			
15	11.5	33.0	60.1	70.1	50.2	60.2			
16	11.5	33.0	60.1	70.1	50.2	60.2			
17	11.5	33.0	60.1	70.1	50.2	60.2			
18	11.5	33.0	60.1	70.1	50.2	60.2			
19	11.5	33.0	60.1	70.1	50.2	60.2			
20	11.5	33.0	60.1	70.1	50.2	60.2			
21	11.5	33.0	60.1	70.1	50.2	60.2			
22	11.5	33.0	60.1	70.1	50.2	60.2			
23	11.5	33.0	60.1	70.1	50.2	60.2			
24	11.5	33.0	60.1	70.1	50.2	60.2			
25	11.5	33.0	60.1	70.1	50.2	60.2			
26	11.5	33.0	60.1	70.1	50.2	60.2			
27	11.5	33.0	60.1	70.1	50.2	60.2			
28	11.5	33.0	60.1	70.1	50.2	60.2			
29	11.5	33.0	60.1	70.1	50.2	60.2			
30	11.5	33.0	60.1	70.1	50.2	60.2			
31	11.5	33.0	60.1	70.1	50.2	60.2			
32	11.5	33.0	60.1	70.1	50.2	60.2			
33	11.5	33.0	60.1	70.1	50.2	60.2			
34	11.5	33.0	60.1	70.1	50.2	60.2			
35	11.5	33.0	60.1	70.1	50.2	60.2			
36	11.5	33.0	60.1	70.1	50.2	60.2			
37	11.5	33.0	60.1	70.1	50.2	60.2			
38	11.5	33.0	60.1	70.1	50.2	60.2			
39	11.5	33.0	60.1	70.1	50.2	60.2			
40	11.5	33.0	60.1	70.1	50.2	60.2			
41	11.5	33.0	60.1	70.1	50.2	60.2			
42	11.5	33.0	60.1	70.1	50.2	60.2			
43	11.5	33.0	60.1	70.1	50.2	60.2			
44	11.5	33.0	60.1	70.1	50.2	60.2			
45	11.5	33.0	60.1	70.1	50.2	60.2			
46	11.5	33.0	60.1	70.1	50.2	60.2			
47	11.5	33.0	60.1	70.1	50.2	60.2			
48	11.5	33.0	60.1	70.1	50.2	60.2			
49	11.5	33.0	60.1	70.1	50.2	60.2			
50	11.5	33.0	60.1	70.1	50.2	60.2			
51	11.5	33.0	60.1	70.1	50.2	60.2			
52	11.5	33.0	60.1	70.1	50.2	60.2			
53	11.5	33.0	60.1	70.1	50.2	60.2			
54	11.5	33.0	60.1	70.1	50.2	60.2			
55	11.5	33.0	60.1	70.1	50.2	60.2			
56	11.5	33.0	60.1	70.1	50.2	60.2			
57	11.5	33.0	60.1	70.1	50.2	60.2			
58	11.5	33.0	60.1	70.1	50.2	60.2			
59	11.5	33.0	60.1	70.1	50.2	60.2			
60	11.5	33.0	60.1	70.1	50.2	60.2			
61	11.5	33.0	60.1	70.1	50.2	60.2			
62	11.5	33.0	60.1	70.1	50.2	60.2			
63	11.5	33.0	60.1	70.1	50.2	60.2			
64	11.5	33.0	60.1	70.1	50.2	60.2			
65	11.5	33.0	60.1	70.1	50.2	60.2			
66	11.5	33.0	60.1	70.1	50.2	60.2			
67	11.5	33.0	60.1	70.1	50.2	60.2			
68	11.5	33.0	60.1	70.1	50.2	60.2			
69	11.5	33.0	60.1	70.1	50.2	60.2			
70	11.5	33.0	60.1	70.1	50.2	60.2			
71	11.5	33.0	60.1	70.1	50.2	60.2			
72	11.5	33.0	60.1	70.1	50.2	60.2			
73	11.5	33.0	60.1	70.1	50.2	60.2			
74	11.5	33.0	60.1	70.1	50.2	60.2			
75	11.5	33.0	60.1	70.1	50.2	60.2			
76	11.5	33.0	60.1	70.1	50.2	60.2			
77	11.5	33.0	60.1	70.1	50.2	60.2			
78	11.5	33.0	60.1	70.1	50.2	60.2			
79	11.5	33.0	60.1	70.1	50.2	60.2			
80	11.5	33.0	60.1	70.1	50.2	60.2			
81	11.5	33.0	60.1	70.1	50.2	60.2			
82	11.5	33.0	60.1	70.1	50.2	60.2			
83	11.5	33.0	60.1	70.1	50.2	60.2			
84	11.5	33.0	60.1	70.1	50.2	60.2			
85	11.5	33.0	60.1	70.1	50.2	60.2			
86	11.5	33.0	60.1	70.1	50.2	60.2			
87	11.5	33.0	60.1	70.1	50.2	60.2			
88	11.5	33.0	60.1	70.1	50.2	60.2			
89	11.5	33.0	60.1	70.1	50.2	60.2			
90	11.5	33.0	60.1	70.1	50.2	60.2			
91	11.5	33.0	60.1	70.1	50.2	60.2			
92	11.5	33.0	60.1	70.1	50.2	60.2			
93	11.5	33.0	60.1	70.1	50.2	60.2			
94	11.5	33.0	60.1	70.1	50.2	60.2			
95	11.5	33.0	60.1	70.1	50.2	60.2			
96	11.5	33.0	60.1	70.1	50.2	60.2			
97	11.5	33.0	60.1	70.1	50.2	60.2			
98	11.5	33.0	60.1	70.1	50.2	60.2			
99	11.5	33.0	60.1	70.1	50.2	60.2			
100	11.5	33.0	60.1	70.1	50.2	60.2			



REVISIONS						
ZONE	LTR	DESCRIPTION	CHANGE NO	DATE	BY	APPROV
A		TU144 WAS FM0000872	73170	08/21/10	SLK	

REVISIONS

[illegible][illegible]